



Pathways Overview

Qualifications	<p>Cache Level 1 Caring for children</p> <p>Key skills – Maths Entry 3</p> <p>Key skills – English Entry 3</p> <p>Key skills – ICT Entry 3</p> <p>NOCN award</p> <p>Paediatric First Aid</p> <p>Award in Workplace Hazards Awareness</p>
Units covered	<p>Investigating a vocational area</p> <p>Self development</p> <p>Science, technology and musical activities for young children</p> <p>Understanding play for early learning</p> <p>Sharing learning experiences with children</p> <p>Human Growth and development</p> <p>Supporting babies to play</p> <p>Craft activities for young children</p> <p>Respecting and valuing children</p> <p>Practical health and safety when working with young children</p> <p>Preparing for your next steps</p>
Entry requirements	16+
Who is it for?	People who are interested in gaining a qualification in Childcare and in the future may want to look for employment in this area. Placements in a Childcare setting may be available and
Cost	<p>Fully funded</p> <p>Travel payments are available for 16-18 year olds</p>
Start date	Available all year round
Duration	6 months
Assessment method	You will put together a portfolio of evidence in training
Personal qualities	<p>Team worker</p> <p>Caring and want to work with children</p> <p>Punctual and reliable</p> <p>Good personal and communication skills</p>
Further Progression	Certificate in Children and Young Peoples Workforce Level 2.

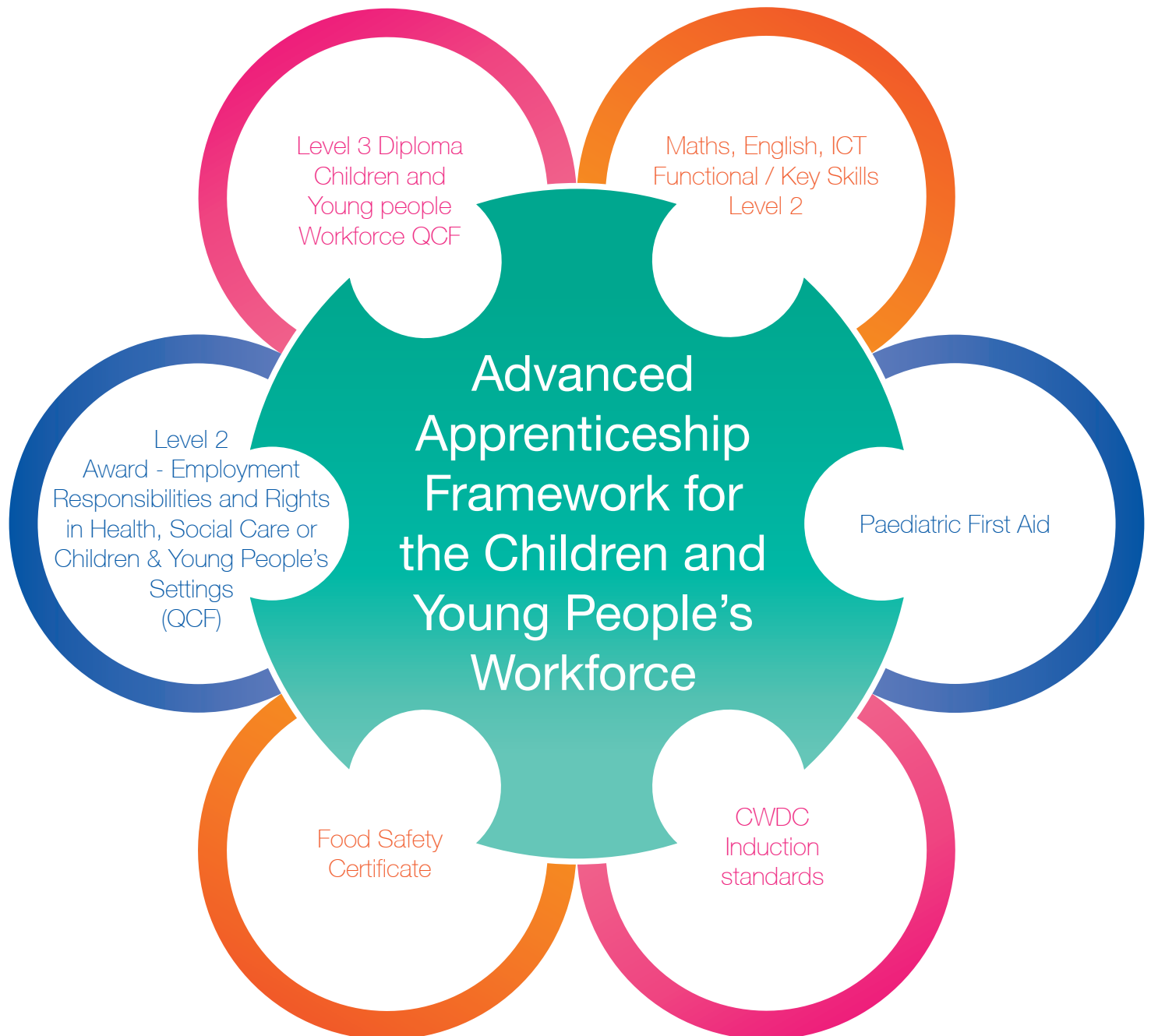
Childcare

Intermediate Apprenticeship



Apprenticeship Overview

Qualifications	<p>Level 2 Certificate for the Children and Young people Workforce (QCF)</p> <p>Key skills – Maths Level 1</p> <p>Key skills – English Level 1</p> <p>Key skills – ICT Level 1</p> <p>Level 1 Award in Employment Responsibilities and Rights in Children and Young Peoples settings</p> <p>Paediatric First Aid</p> <p>CWDC Induction standards</p> <p>Food safety course</p>
Units covered	<p>Child and young person development</p> <p>Safeguarding and welfare requirements</p> <p>Maintain and support relationships with children</p> <p>Paediatric First Aid</p> <p>Health and safety</p> <p>Equality and inclusion in children and young people setting</p> <p>An introduction to communication and personal development</p>
Entry requirements	<p>16-17 years old - employed by Total People if not employed by Childcare Setting.</p> <p>18+ Employed by a Childcare setting</p>
Who is it for?	<p>Young people who are looking to gain employment in an early year setting and are assessed as suitable to go onto level 2 or people who are currently employed in a Childcare setting.</p>
Cost	<p>16-24 Funding will be accessed for the duration of the programme.</p> <p>25+ funding may also be available</p>
Start date	Available all year round
Duration	9 months
Assessment method	<p>You will put together a portfolio of evidence in training</p> <p>Observation in the childcare setting working directly with children</p> <p>Professional discussion</p>
Personal qualities	<p>Team worker</p> <p>Caring and want to work with children</p> <p>Punctual and reliable</p> <p>Good personal and communication skills</p>
Further Progression	Diploma in Children and Young Peoples Workforce Level 3.



Apprenticeship Overview

Qualifications	Level 3 Diploma for the Children and Young people Workforce (QCF) Key skills – Maths Level 2 Key skills – English Level 2 Key skills – ICT Level 2 Level 2 Award in Employment Responsibilities and Rights in Children and Young Peoples settings Paediatric First Aid CWDC Induction standards Food safety certificate
Units covered	Understand and promote child and young person development Understand how to safeguard the well being of children Promote equality and inclusion in children and young peoples settings Engage in personal development in children and young people's settings Support children and young peoples health and safety Develop positive relationships Understand how to support positive outcomes for children and young people
Entry requirements	17+ years old
Who is it for?	For people who are employed in an early years setting and meet the entry requirements after an initial assessment
Cost	Fully funded
Duration	18 months
Start date	Available all year round
Assessment method	You will put together a portfolio of evidence in training Observation in the childcare setting working directly with children Professional discussion
Personal qualities	Team worker Caring and want to work with children Punctual and reliable Good personal and communication skills
Further Progression	Early Years Foundation Degree and Management qualifications